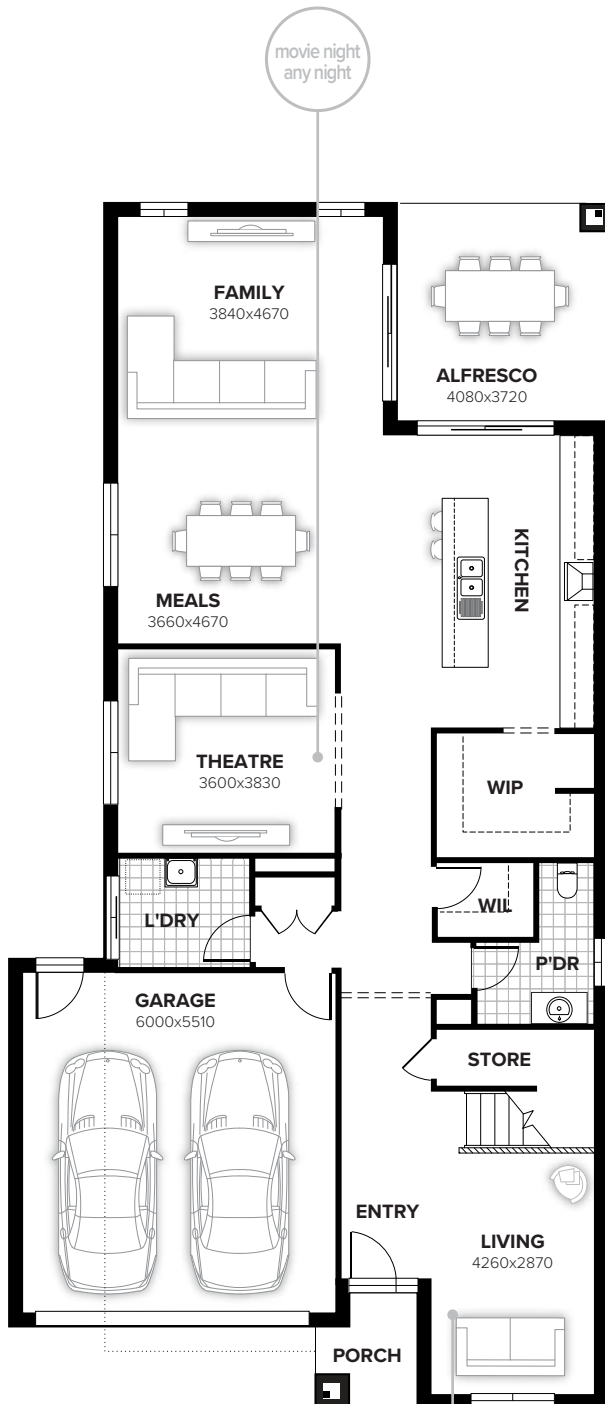


CROFT



CROFT 336

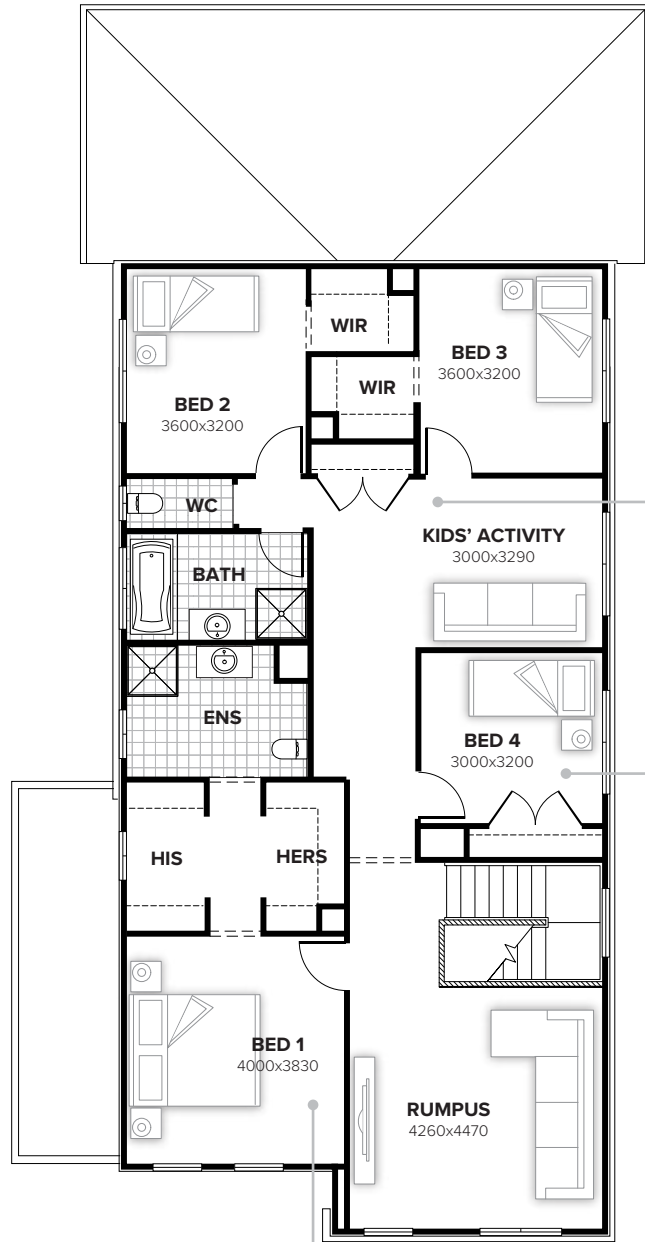
4 2.5 1 2



ground floor

movie night
any night

get away
from it all



first floor

the fun
starts here

fit the
whole
family

sleep easy,
in style and
space

FLOORPLAN OPTIONS

Want to put a personal touch on your home? Speak to your New Home Consultant about the exciting range of ready-to-go design options for this floorplan. Popular design options include:

- Kitchen option
- Laundry upgrade
- Alfresco option
- Guest bedroom option
- Powder room upgrade
- Ensuite upgrade

residence	282.07sqm	30.36sq
alfresco	14.28sqm	1.54sq
porch	3.32sqm	0.36sq
garage	36.37sqm	3.91sq
total	336.04sqm	36.17sq

home width	10.55m
home length	21.23m

Listed details based on Barrine façade floorplan (illustrated)

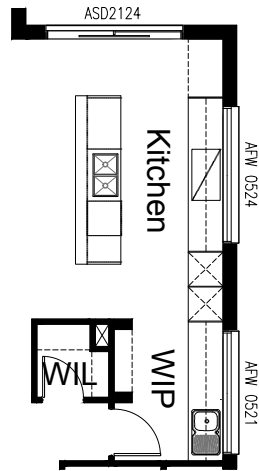
Call 13 BURBANK Visit burbank.com.au

Burbank 
#noplacelikehome

*Copyright conditions. All photos and illustrations are representative only. Floor plans and specifications may be varied by Burbank without notice, the dimensions are diagrammatic only and a Building Contract with final drawings will display correct dimensions and detail. All designs are the property of Burbank and must not be used, reproduced, copied or varied, wholly or in part without written permission from an authorised Burbank representative. Copyright Burbank Australia (NSW) Pty Ltd. ABN 88 610 822 870. NSW BL 295627C. ACT BL 2016566.

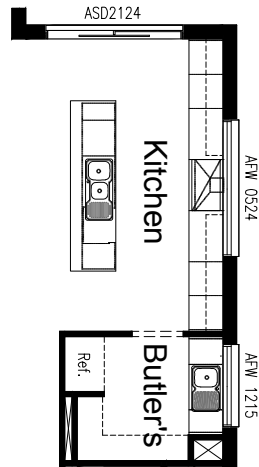
OPTION K1

Provide Kitchen option with 800mm wide island bench, reconfigured Walk-in Pantry and additional Walk-in Linen. Including 900mm integrated rangehood, 900mm electric cooktop, 2No. 600mm ovens in 2No. wall oven towers with pot drawers below and open shelf and doors above, 450mm drawer unit, dishwasher provision, 5No. 900mm base cupboards, 3No. 800mm base cupboards, 1No. 300mm base cupboard, 3No. 900mm overhead cupboards, 3No. 800mm overhead cupboards, 1No. 514x2170mm aluminium frame fixed window, 1No. 514x2170 aluminium frame fixed window, refrigerator space with open shelf above, additional single bowl sink to WIP, additional bench top to suit. No tiles required (paint only) as fixed window to act as splashback. 4No. 300mm shelves to WIP and additional 720mm hinged door and 4No. 450mm shelves to WIL.



OPTION K2

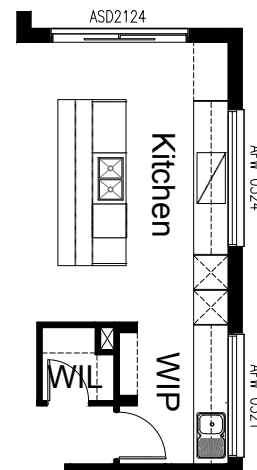
Provide Kitchen option with reconfigured Butler's Pantry. Including 900mm canopy rangehood, 900mm electric cooktop, 900mm under bench oven, 450mm drawer unit, dishwasher provision, microwave provision with pot drawer, 2No. 900mm pot drawers, 4No. 600mm base cupboards, 1No. 800mm base cupboard, 1No. 450mm base cupboard, 1No. 400mm base cupboard, 4No. 700mm overhead cupboards, 2No. 600mm overhead cupboards, 1No. 514x2170mm aluminium frame fixed window, 1No. 1200x1450 aluminium frame fixed window, refrigerator space with open shelf above, additional single bowl sink to Butler's Pantry, additional bench top and tiled splashback to suit.



Call 13 BURBANK Visit burbank.com.au

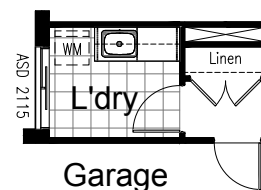
OPTION IP2

Provide Kitchen option as per Display with 1200mm wide island bench, reconfigured Walk-in Pantry and additional Walk-in Linen. Including 900mm integrated rangehood, 900mm electric cooktop, 2No. 600mm ovens in 2No. wall oven towers with pot drawers below and open shelf and doors above, 450mm drawer unit, intergrated dishwasher unit, 3No. 900mm pot drawers, 2No. 700mm pot drawers, 2No. 900mm base cupboards, 1No. 700mm base cupboard, 1No. 300mm wine shelves, 3No. 900mm overhead cupboards, 1No. 1000mm open self, 1No. 514x2170mm aluminium frame fixed window, 1No. 514x2170 aluminium frame fixed window, refrigerator space with 1No. 1000mm overhead cupboard above, additional single bowl sink to WIP, additional bench top to suit. No tiles required (paint only) as fixed window to act as splashback. 4No. 300mm shelves to WIP and additional 720mm hinged door and 4No. 450mm shelves to WIL.



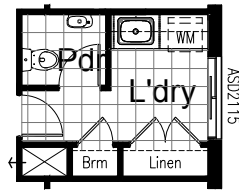
OPTION Ld1

Provide Laundry Option with additional inset laminated trough, 2No. 700mm base cupboards, 2No. 700mm overhead cupboards with additional tiled splashback and bench top to suit.



OPTION LD2

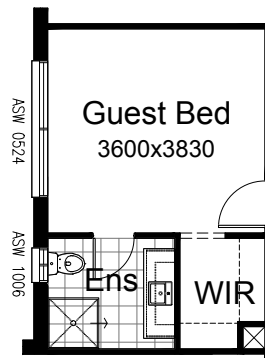
Provide Laundry Option reconfiguring Powder Room and moving Laundry to new location and removing Walk-in Linen. Provide additional inset laminated trough, 1no. 800mm base cupboard, 2no. 800mm overhead cupboard with additional tiled splashback and full width bench top with open space below. Replace ASW1209 window with ASD 2115 sliding door. Provide 2No. 620mm hinged doors to new Linen closet with 4No. 450mm shelves and 620mm hinged door to Broom closet with 1No. 450mm shelf. Remove 982mm vanity and basin to Powder and replace with mini wall basin.



Note: Only available in conjunction with Option IP1.

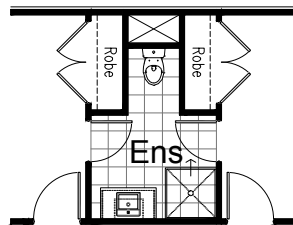
OPTION IP2

Provide Guest bedroom option to Theatre by relocating Laundry and Linen closet. Provide 820mm hinged door to bedroom, 4No. 450mm shelves to new Walk-in Robe, 900x900mm tiled shower base, new WC and 1482mm vanity with single basin to Ensuite. Replace ASW1218 window to with ASW0524 window to Bedroom and provide additional ASW1006 window to Ensuite. Note: Only available in conjunction with Option LD2.



OPTION ENS1

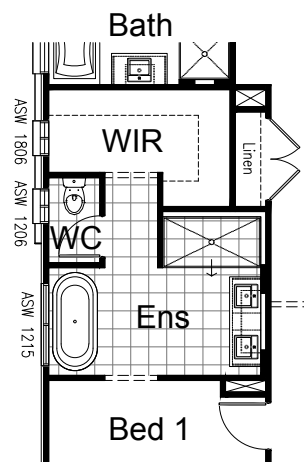
Provide Jack and Jill Ensuite option to Bedrooms 2 and 3 in lieu of Walk-in Robes and Linen closet. Provide 2No. 720mm hinged doors to each standard Robe with 450mm shelves and hanging rails, void for heating stack, 900x900 tiled shower base, new WC and 982mm vanity with single basin. 2No. additional 720mm hinged doors to Ensuite.



Note: option decreases size of Bedrooms 2 and 3 to 3000mm wide.

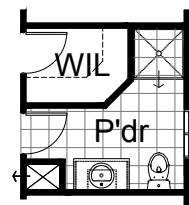
OPTION LD2

Provide reconfigured Ensuite and Walk-in Robe option with 1800x900 tiled shower base, 1582mm vanity with double basin, enclosed WC with 720mm hinged door, freestanding bath with 300mm spout, 90mm deep shelf/nook to walls behind vanity and shower, replace ASW1209 and ASW2009 windows with ASW1806, ASW1206 and ASW1215 windows. Provide Linen closet with 2No. 720mm hinged doors and 4No. 450mm shelves.



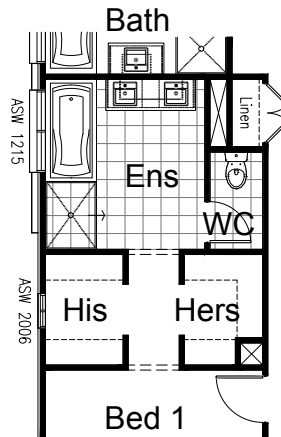
OPTION IP2

Provide Powder upgrade including additional 900x900mm tiled shower base, relocate WC and vanity basin. Angle stud wall to Walk-in Linen to suit.



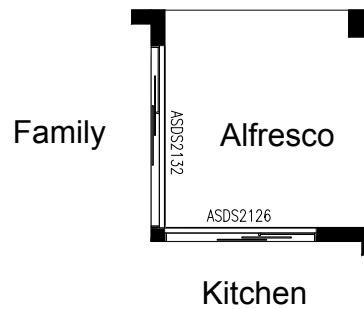
OPTION ENS3

Provide Ensuite option with 1200x900 tiled shower base, 1675 bath with tiled hob, 1582mm vanity with double basin, enclose WC with 720mm hinged door. Option decreases Walk-in Robes by 600mm. Provide Linen closet with 2No. 520mm hinged doors and 4No. 450mm shelves. Replace ASW1209 with ASW1215 window.



OPTION EP1

Provide Stacker sliding door option by replacing 2No. ASD2124 sliding doors with ASDS2132 and ASDS 2126 stacker sliding doors. Steel post to corner to support lintels above doors.



OPTION IP3

Provide Jetmaster SL-350 gas fireplace, 400mm off floor level in a 1400mm x 420mm boxed out plaster wall with a 4 sided black fascia to Family room side wall..

